



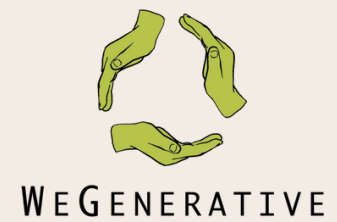
USFS Greening Fires Initiative **BASIN WILDFIRE WASTE DIVERSION REPORT**

PREPARED BY SOPHIA NIELSEN,
MOLLY MCGEE, & KELSEY BRIXON
WEGENERATIVE LLC
WEGENERATIVE@GMAIL.COM
503.883.1353

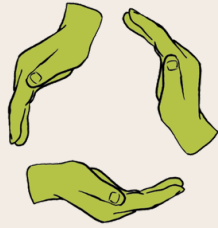


WEGENERATIVE

TABLE OF CONTENTS



Incident Information	3
Executive Summary	4
Our Team	5
Diversion Data	6
Program in Action	17
Program Benefits	21
Greenhouse Gas Equivalences	26
Lessons Learned	27
Attachments	29



W E G E N E R A T I V E

WeGenerative LLC
Sophia Nielsen
wegenerative@gmail.com
admin@wegenerative.com
503.883.1353

INCIDENT INFORMATION

Dates of service

Mobilized 6/30/24

Arrived 7/1/24

Demobilized 7/14/24

Report Sent 11/20/24

Incident General Information

Basin Fire

Sierra National Forest

ICP Location: Sierra High School, 33326 Lodge Rd, Tollhouse, CA 93667

Southern California GACC

Native land of the following tribes*: Nuyhmy (Western Mono/Monache), Nüümü Witü (Eastern Mono/Monache), Nüümü (Norther Paiute)

Management

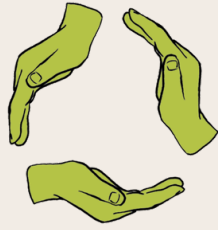
California Team 11 , California Team 13

Personnel

Maximum: 1,340; Minimum: 217; Average: 850

Headcount data taken from Situation Report

*This was determined by overlaying the Incident Fire Map from InciWeb with data from Native-Land.ca to identify the native lands affected by the Fire.



W E G E N E R A T I V E

EXECUTIVE SUMMARY

WeGenerative is pleased to present the Waste Diversion Report for the Basin Wildfire. During our 14 days on the incident implementing waste reduction operations at the ICP, we achieved a significant 39.6% diversion rate by weight overall.

Our approach prioritized community engagement and collaboration. We successfully partnered with local recyclers, farmers, composters, food banks, and on-site personnel, emphasizing the importance of mutual support and positive relations within our team. WeGenerative firmly believes that our team is our most valuable resource, and our focus on positive team morale is instrumental in the success of our operations.

The detailed waste diversion data illustrates our dedication to accurate measurements and calculations. We meticulously weighed and measured materials, deriving diversion data from verified, weighed loads. Noteworthy is our commitment to food donation, contributing over 13,823 lbs of food scraps benefiting multiple local pig farmers and compost facilities, and 5,333 lbs of edible food to the local food bank. Additionally, we monetized recyclables to donate proceeds to the local Central California food bank just down the road from the ICP.

WeGenerative is grateful for the opportunity to contribute positively to the local community, turning would-be waste into valuable resources and promoting environmental stewardship. Our dedication to waste diversion extends beyond statistics; it represents a commitment to a more sustainable and responsible future.

OUR TEAM

Our team included (listed in order pictured) team lead Sophia Nielsen, Josh “Yoshi” Graveline, Doug Landers, Moon Mandel, Molly McGee, Josh “Best Day Ever” Chandler, Kylie Foldarvy, and Eric Jolley.



DIVERSION SUMMARY

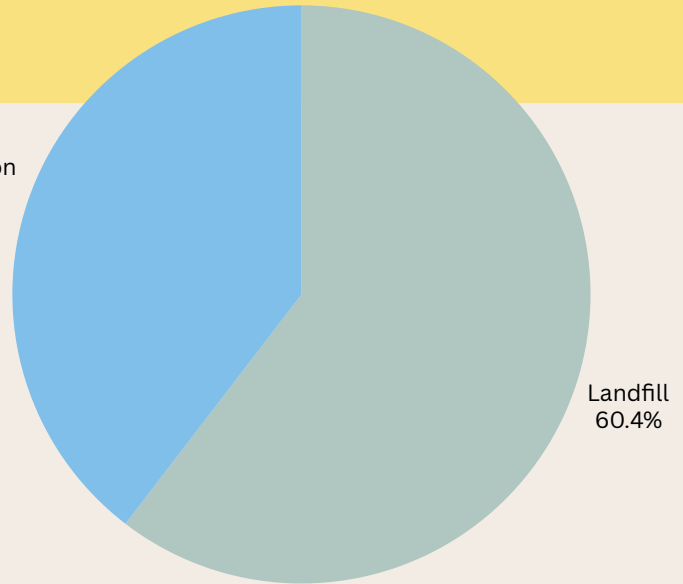
We diverted
by weight overall.

39.6%

Landfill
50,565 lbs

Total diversion:
33,127.24 lbs

Diversion
39.6%



The pie chart to the right shows diverted (blue) vs wasted materials, (grey) by percentage of weight.



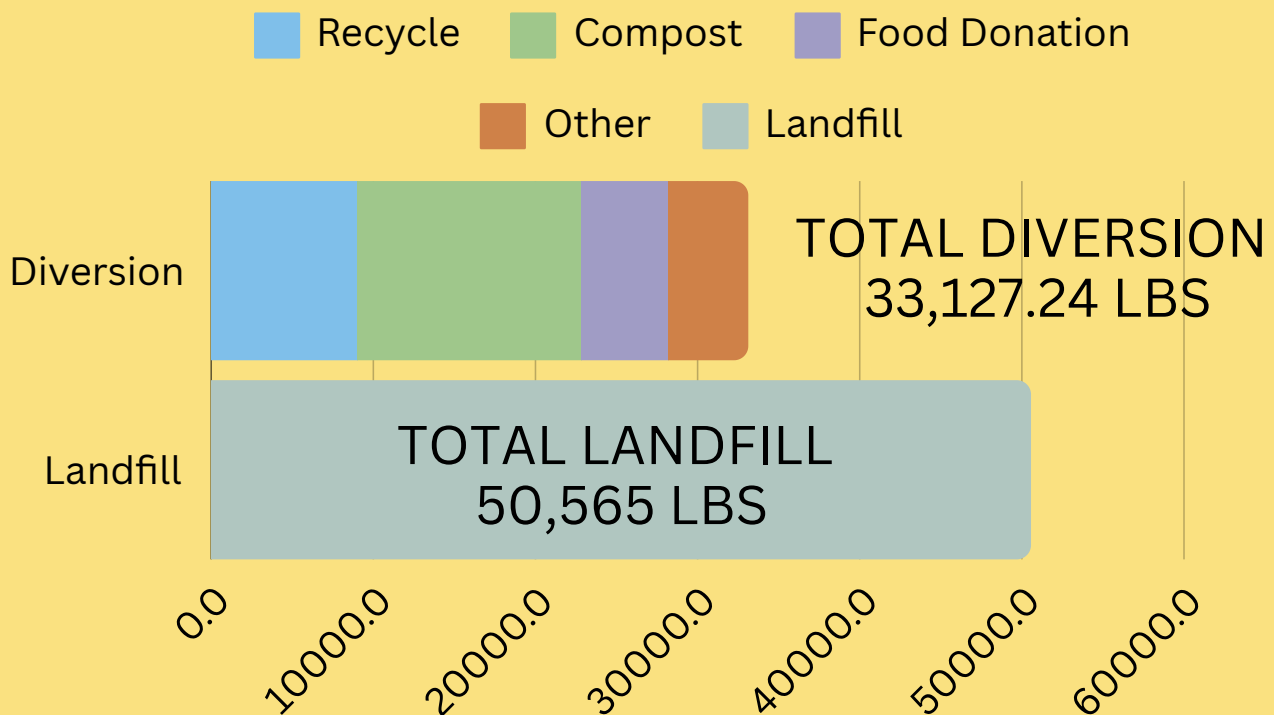
Moon loads cardboard into cardboard recycling dumpster at the front of house recycle center. July 2024.

DIVERSION DATA



The bar chart below shows the diverted materials as compared to the landfilled materials. Both are measured by weight, in pounds. Combined recycled materials made up the greatest weight overall of all diverted materials when considering each diverted stream: recycling, organics, food donation, and special/other materials.

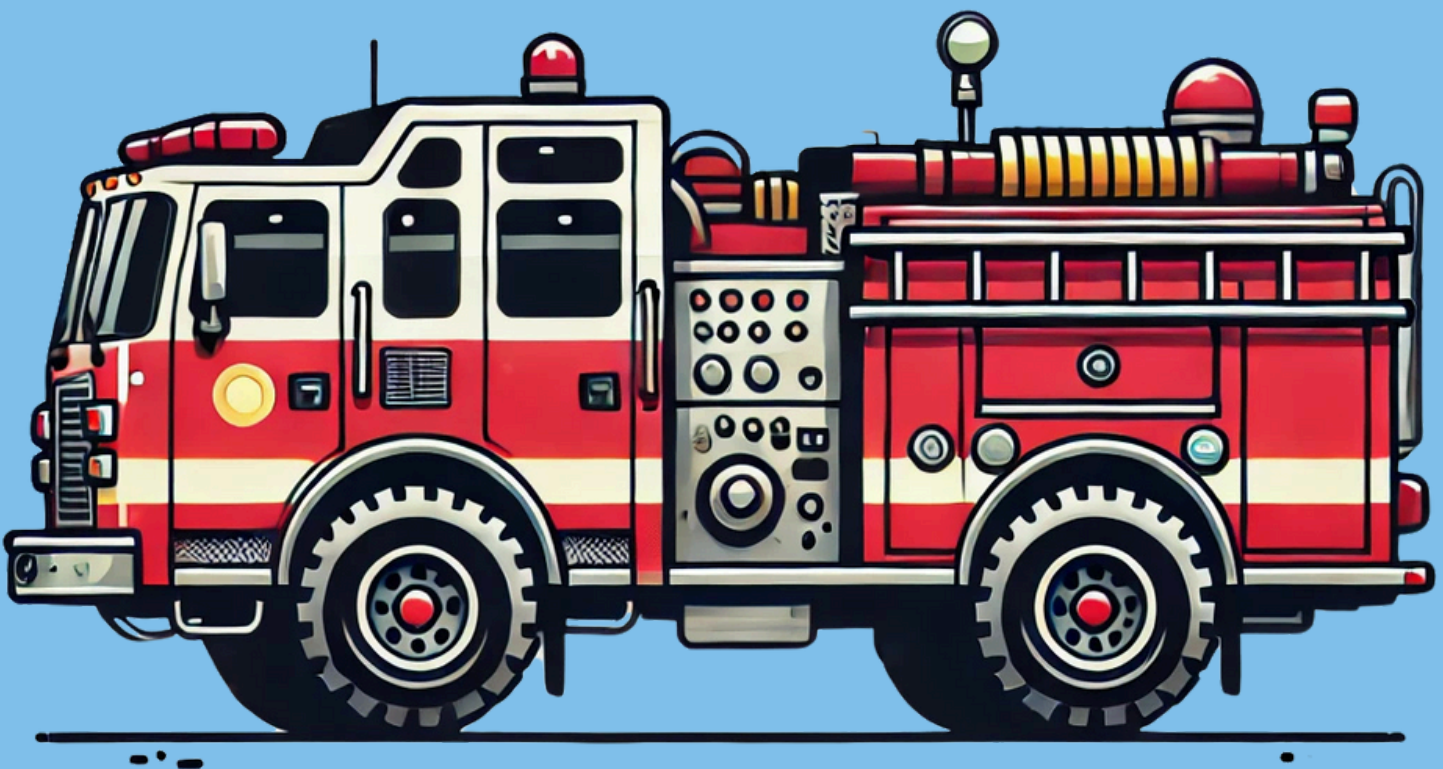
Recycling includes cardboard, paper, plastic bottles, metal cans, scrap metal, and glass.



PICTURE THE IMPACT

It's difficult to imagine what **33,127.24 lbs** of total diversion looks like. Instead, picture this:

We saved 1 fire engine from landfill



According to FAMA, a Type 3 or Type 4 wildland firefighting engine can weigh between 26,000 and 33,000 lbs when fully loaded with water and equipment.

Regardless of whether you picture the resources saved as pounds or firetrucks, our operation saved a significant weight from landfill.

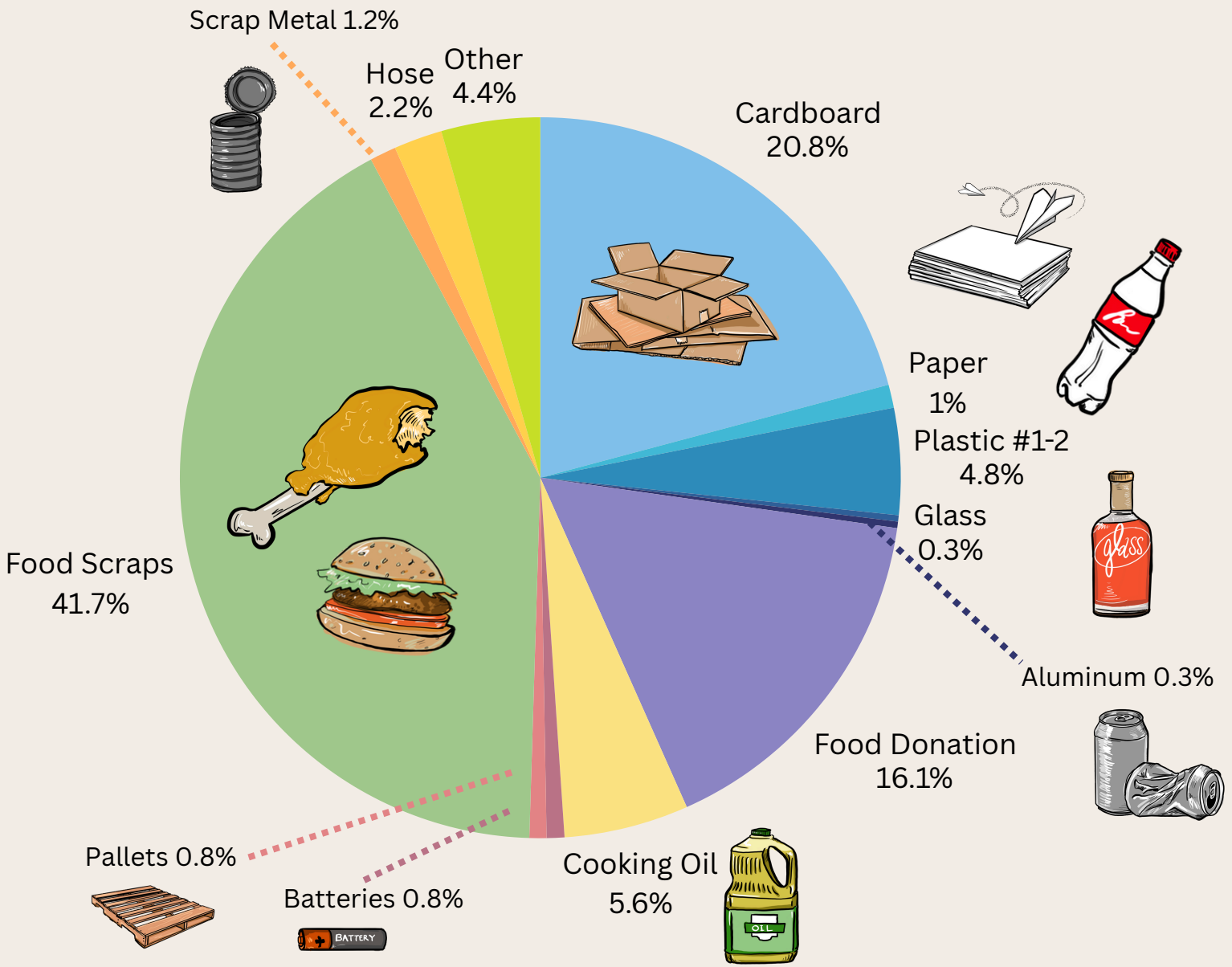
DIVERTED MATERIALS

The following graphic demonstrates the diverted streams at this wildfire.



The visual representation of each material stream is in approximate, not exact, proportion to its significance by weight.

DIVERTED MATERIALS



This pie chart shows all diverted materials by percentage of weight. The most significant material diverted (by weight) was food scraps, accounting for 41.7% of diverted material.

DIVERSION DATA METHODS



We meticulously weighed, measured, and calculated material weights while on incident. All of our data is from verified, weighed loads.

Compost weights were taken at the weigh house at the industrial compost facility. Donated food scrap loads were individually weighed by the bucket or bin, as shown left.

Photo: Best Day Ever weighs compost with a hand scale. 7/13/24.

Cardboard weights were derived from weight tickets from the Clover Hauling Company weight receipts.

Food donation weights were weighed by the box by the local food bank.

Batteries were weighed by the bucket, with final weights verified by Battery Recyclers of America upon mass pickup. Other special materials were individually weighed.

MATERIAL TOTALS

Commodity Type	Weight (pounds)
Cardboard	6,905.7
Plastic #1	1202
Plastic #2	380.8
Paper	344.2
Aluminum	81.5
Tin	12
Glass	97
Scrap Metal	391.1
LDE Film	37.8
Food Scrap	13,823.86
Food Donation	5,333.48

Commodity Type	Weight (pounds)
Cooking Oil	1,852
Batteries	263
Pallets	253
Goods Donation	12
Hose	720
Grey Water	1,417.8



RECYCLING LOCATIONS

Name	Commodity Type	Location	Dates
Allan Company	Cardboard, Plastic #1, Plastic #2, Paper, Aluminum, Tin, Glass, scrap metal, LDPE Film	Fresno	7/10/2024, 7/13/2024, 7/14/2024, 7/15/2024, 7/18/2024,
Cedar Avenue Recycling and Transfer Station	Cardboard	Fresno	7/10/2024, 7/13/2024, 7/15/2024, 7/18/2024
Cold Spring Rancheria	Food Donation	Tollhouse	7/9/2024
Saint Lutheran Church	Food Donation	Auberry	7/6/2024, 7/8/2024, 7/9/2024, 7/10/2024, 7/11/2024, 7/12/2024, 7/13/2024, 7/14/2024, 7/15/2024
Salvation Army	Food Donation	Fresno	7/4/2024, 7/5/2024
Dave	Cooking Oil	Tollhouse	7/7/2024, 7/9/2024, 7/14/24
Los Angeles Zoo	Fire Hose	Los Angeles	7/16/2024

RECYCLING LOCATIONS

Name	Commodity Type	Location	Dates
South Valley Compost Facility	Compost & Food Scrap	Tulare	7/5/2024, 7/6/2024, 7/9/2024, 7/14/2024
Cindy's Farm	Food Scrap	Auberry	7/13/2024, 7/14/2024
Dan's Farm	Food Scrap	Tollhouse	7/3/2024, 7/4/2024, 7/5/2024, 7/9/2024
Craig's farm	Food Scrap	Auberry	7/9/2024
Melissa's farm	Food Scrap	Tollhouse	7/13/2024, 7/14/2024
Battery Recyclers of America	Batteries	National Battery Recycling Company	7/14/24
Basin Grey Water Contractors	Grey Water	ICP	7/2/2024, 7/4/2024, 7/5/2024, 7/6/2024, 4/7/2024, 7/8/2024

WASTE LOCATIONS

Name	Commodity Type	Location	Dates
Cedar Avenue Recycling and Transfer Station	Landfill Actual weights used	Fresno Hauled from Tollhouse ICP	7/4/2024, 7/8/2024, 7/11/2024, 7/12/2024, 7/13/2024, 7/16/2024, 7/17/2024

WASTE WEIGHT RECEIPTS

Click this link to access a Google folder with all confirmed weight receipts from Cedar Avenue Recycling and Transfer Station for the Basin Fire.

BASIN 2024 WEIGHT RECEIPTS:

[HTTPS://DRIVE.GOOGLE.COM/DRIVE/FOLDERS/1YHFVX-ZW31OQPNNF3FYBQ5EZGWJOLU3L?USP=SHARE_LINK](https://drive.google.com/drive/folders/1YHFVX-ZW31OQPNNF3FYBQ5EZGWJOLU3L?usp=share_link)

Examples

CEDAR AVENUE RECYCLING and TRANSFER STATION, L.P.
3457 S. CEDAR AVE.
FRESNO, CA 93725
(559) 233-1158

SNF - Basin Fire

Ticket: 2177592
Date: 7/4/2024
Time: 12:23:33 - 12:29:08

Truck: 03207M2
Customer: 0006470001/WESTERN SOLID WASTE
License: 03207M2
Truck Type: RollOff

Gross: 33260 lb In Scale 1
Tare: 28580 lb Out Scale 2
Net: 4680 lb

Comment:

Origin	Materials & Services	Quantity	Unit
FREU/FRESNO (UNINCORPORATE MSW/MSW		2.34	ton
FREU/FRESNO (UNINCORPORATE 1/ENVIRONMENTAL FEE		1.00	EA
FREU/FRESNO (UNINCORPORATE 2/FUEL SURCHARGE		1.00	EA

Driver: _____ Deputy Weighmaster: *Tania Miller*

THIS IS TO CERTIFY that the following described commodity was weighed, measured, or counted by a weighmaster, whose signature is on this certificate, who is a recognized authority of authority, as prescribed by Chapter 7 governing rules under 12700 of Division 8 of the California Business and Professions Code, administered by the Division of Measurement Standards of the California Department of Food and Agriculture.

CEDAR AVENUE RECYCLING and TRANSFER STATION, L.P.
3457 S. CEDAR AVE.
FRESNO, CA 93725
(559) 233-1158

NSF - Basin Fire

Ticket: 2177589
Date: 7/4/2024
Time: 12:06:37 - 12:12:47

Truck: 9G10372
Customer: 0006470001/WESTERN SOLID WASTE
License: 9G10372
Truck Type: RollOff

Gross: 36340 lb In Scale 1
Tare: 33300 lb Out Scale 2
Net: 3040 lb

Comment:

Origin	Materials & Services	Quantity	Unit
FREU/FRESNO (UNINCORPORATE MSW/MSW		1.52	ton
FREU/FRESNO (UNINCORPORATE 1/ENVIRONMENTAL FEE		1.00	EA
FREU/FRESNO (UNINCORPORATE 2/FUEL SURCHARGE		1.00	EA

Driver: _____ Deputy Weighmaster: *Tania Miller*

THIS IS TO CERTIFY that the following described commodity was weighed, measured, or counted by a weighmaster, whose signature is on this certificate, who is a recognized authority of authority, as prescribed by Chapter 7 governing rules under 12700 of Division 8 of the California Business and Professions Code, administered by the Division of Measurement Standards of the California Department of Food and Agriculture.

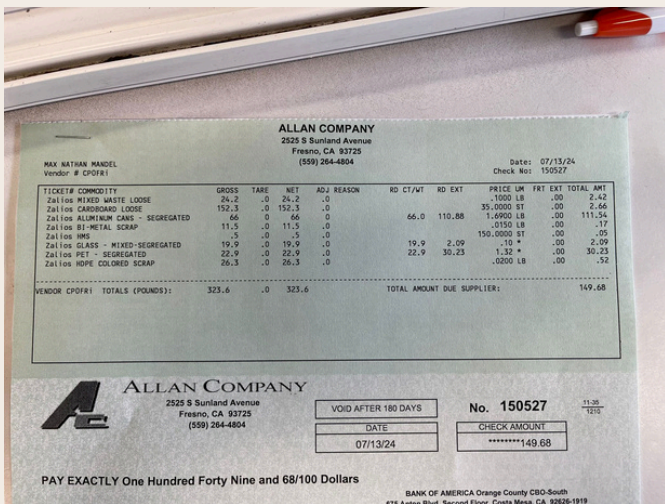
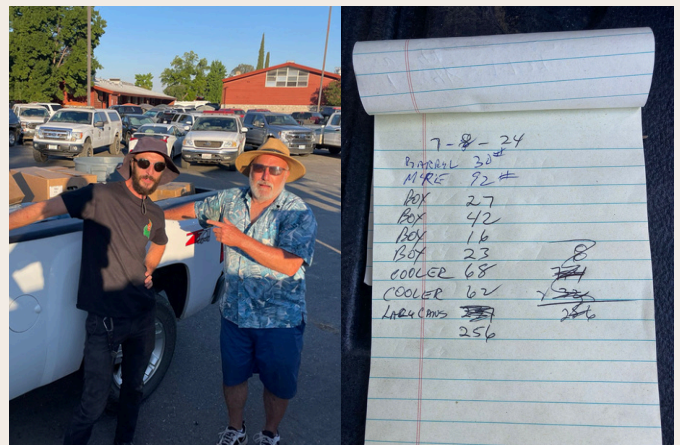
RECYCLING RECEIPTS

Click this link to access a Google folder with daily diversion photos, weights, and receipts for the Basin Fire.

BASIN 2024 RECYCLING PHOTOS AND RECEIPTS:

<https://drive.google.com/drive/folders/14HZn39inaVciP5bAoqsNIEEJzMH3e0xA?usp=sharing>

Examples



Photos from top left, clockwise:

Molly drops a load at South Valley Compost and weight receipt. 7/9/24.

Yoshi gives Howard non-perishable donation by the Saint Lutheran Church, with weights pictured on the right. 7/8/24.

Recycling drop receipt from Allan Company Fresno. 7/8/24.

BASIN FIRE ICP



Moon moving cardboard at recycle center cardboard corral. July 2024.

Basin Fire ICP was at the Sierra High School in Tollhouse, CA.

Our recycle center was the first thing seen as crews entered camp, sidled up on the grass median between the limited parking and the road into the ICP.

We were located just minutes away from a local food bank, based out of the Sierra Lutheran Church. As the fire went on, we met local farmers within miles, some of whom worked with the school. We were able to donate food scraps to local farmers just down the road, and food donation to the school the ICP was based out of.

RECYCLE CENTER



Photo, left:
Molly unbags carrots at the Recycle Center. 7/8/24.

Photos, bottom left to right:

Team photo of Soph, Yoshi, Molly and Moon in front of recycle center. 7/10/24.

Molly sorts trash. 7/10/24.



PROGRAM IN ACTION



Photos from top left, clockwise:

Yoshi and Molly load cardboard into cardboard dumpster. 7/1/24.

Moon and Molly sort compost at the front of house compost station. July 2024.

Molly sorts rotting food from a cooler surrounded by an explosion of rotten eggs. 7/8/24.

Moon loads a box truck with bottles and cans. July 2024.

PROGRAM IN ACTION



Waste staging areas within the crew camping space allows for banks of trash to be placed in locations far from recycle centers and in volumes larger than make sense to put into a bin.



Photos, from top (July 2024):

Yoshi gets out of truck ready to load up staged waste at waste staging area.

WeGenerative waste staging areas placed in crew camping area.



Cardboard corral and bins paired with Helibase dumpster.

Reefer bin set sits empty after just being serviced.

PROGRAM BENEFITS

Giving Back to Local Farmers

We donated edible food and food scraps on a daily basis. On average, we donated 164.8 lbs of food a day to local farmers alone! This statistic does not include the average 822.6 lbs of food scraps a day composted at South Valley Composting Facility to be turned into nutrients for farmers in the Fresno region. This facility told us that our Compost loads were the “best sorted loads they’d ever seen.”

Food Sorted, Saved, and Donated to Food Banks

We donated over 5,333 lbs of edible food to Saint Lutheran Food Bank in Auberry, the Sierra High School, and Cold Springs Rancheria (a local tribal organization). Organizations that benefited from our donations as redistributed from the Sierra Lutheran Church Central California Food Bank included Senior Oaks Community Center, Sierra High School FFA, Morgan Church, Sierra Lutheran Church, Sierra Baptist Church, and local community members.

Recycling Proceeds Donated to NonProfits

Our sorted recyclables were monetized for donation to charity. Charity options were presented to logistics teams based on our engagement with the community and selected by the Logistics Chief. We donated \$384.96 to the Central California Food Bank at the Sierra Lutheran Church in Auberry.

Reducing liquid trapped in landfill. It is estimated that 1% of the world’s fresh water supply is trapped in water bottles with their caps on, sealed in landfills. We always empty the liquid out of water bottles and other containers while we sort waste. We partnered with a grey water contractor on site to recycle 1,417.8 lbs of grey water.

Turning would-be waste into resources. On the Basin fire we partnered with Dave, a local firefighter and cooking oil recycler, to recycle 1,852 lbs of cooking oil for biofuel. We also collected 263 lbs of batteries which were responsibly recycled by Battery Recyclers of America.

SUPPORTING LOCAL FARMERS



Melissa's Farm Photos all taken of Melissa's goats and chickens at her farm. July 2024.

We are grateful to have worked with a total of 4 farmers on the Basin fire: Melissa, Cindy, Craig, and Dan.

We worked with each farmer to ensure that the food scraps we brought them adhered to the unique needs of their animals. Over the course of our time on the incident, we donated an average of:

164.8 LBS OF FOOD TO FARMERS A DAY

FOOD DONATIONS FOR THE LOCAL COMMUNITY

We focus on food donation as the most valuable resource to save from waste and contribute positively to the local community. We partnered daily with the caterers and the Reefer team at each ICP, and sorted through individual leftovers and lunches to achieve large volumes of daily food donation. We donated food to the local tribe's Cold Springs Rancheria community center, the Sierra High School, and the Central California Food Bank at Sierra Lutheran Church. These efforts totaled in:

5,333.48 LBS OF FOOD DONATED



Photos clockwise from top left: local tribe member Tim holds box of food for the Cold Spring Rancheria, a tribal community center. 7/9/24.

Yoshi unloads food at the Sierra Church food bank. 7/10/24.



On average, we achieved:

381 LBS FOOD DONATED A DAY



Our catering friend at DF Zee's, Justin, gives food to Howard, the food bank local. 7/10/24.

RECYCLING FOR CHARITY

We sorted, transported, and monetized recycling including plastic bottles, aluminum cans, and scrap metal for donation to local charity. In total, recycling became

\$384.96 DONATED

towards the Central California Food Bank, based out of the Sierra Lutheran Church in Auberry, CA. This is the same local food bank that we worked with daily, and donated perishable and nonperishable food to.



Central California Food Bank at the Sierra Lutheran Church distributes food throughout the community. Their beneficiaries include: Senior Oaks Community Center, Sierra High School FFA, Morgan Church, Sierra Lutheran Church, Sierra Baptist Church, and local community members.



Photos above, left to right:

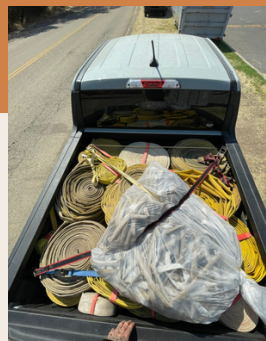
Volunteers unload food donation at Central California Food Bank. July 2024.

Molly and Howard give the thumbs up by a truckload of food donation. 7/12/24

SPECIAL MATERIALS

Special materials require special considerations, processes, and outlets. They include pallets, batteries, cooking oil, scrap metal, film plastic, and fire hose.

We are excited about our continued partnership for used fire hose donation with the Los Angeles Zoo Enrichment Program. The hose will be repurposed into enrichment materials for zoo wildlife, which could include toys for tigers and hanging hammocks for monkeys.



Photos from top left, clockwise (July 2024): Molly organizes batteries. Dave, our local cooking oil connection, sucks up oil into his mobile tank. Pallets stacked ready for load. Hose after being rolled up. Hose loose.

GREENHOUSE GAS EQUIVALENCES:

The Impact of Saving Food From the Landfill

On the Basin fire we saved 19,157.24 lbs of food from the landfill. This includes both the edible food we donated to local food banks and food scraps we donated to farmers. It's hard to picture what it looks like to save 19,157.24 lbs of food from being landfilled, let alone the 72,797.5 lbs of methane emissions* consequently prevented from entering the atmosphere and negatively contributing to the greenhouse gas effect.

Instead, picture this:

From the food waste alone we saved:

(not including any of the emissions saved from recycling efforts of other materials)

the same amount of carbon as:

1,079 Acres of US Forests in a Year

We saved the greenhouse gas emissions equivalent of:

NOT Burning 1,018,948 lbs of Coal



*A single pound of food waste that is not landfilled is estimated to save 3.8 lbs of methane emissions according to the Food and Agriculture Organization. Emissions equivalencies above are calculated using the EPA Emissions Equivalence Calculator.

LESSONS LEARNED

The following are our team's lessons learned and suggestions for improvement on future incidents.

Challenges

We found the following challenges at this particular incident

- Limited parking was available for incident personnel.
- Heat over 115 degrees, contributing to bees, rapid growth of maggots and an inordinate volume of rotten eggs.

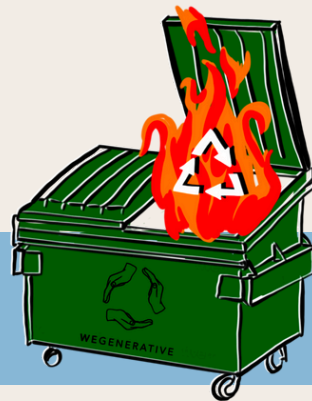
Successful Strategies

- Drive-through style waste drop-off helped to maximize traffic flow efficiency and minimize the footprint needed for trash drop from engine crews.
- Waste staging areas paired with bin sets in camping areas created codified trash drop-off zones for bags in addition to loose trash.

Safety Best Practices

- Storing compost in closed containers while at the compost station helped avoid bees being attracted to it.
- Storing compost in box trucks after hauling from first location to be secondarily contained in also helped reduce bees.





Thank You

SPECIAL THANKS TO

BCMG Carty Carson our POC for supporting the program success and particularly for advocating for our data to be shared when met with challenges by the waste haulers due to their administrative policy

FACL James for quizzing us on trash facts and keeping us on our toes

Maria the FACL for supporting the program overall

Will in FACL for positive support of the program

FDUL Colleen for challenging us to problem solve the unique challenges of a bee-ridden ICP, such that we could set up and maintain safe conditions for crews at catering and have successful front of house composting

DF Zees: especially Justin, Aaron, Mike, Alex, Fred

Dave the cooking oil guy

Howard with Sierra Lutheran Church Food bank

Basin Fire Tribal Liaison

Cold Springs Rancheria tribal organization

South Valley Compost

Allen Recycling

Sierra High School

ATTACHMENTS NOT ELSEWHERE INCLUDED

Attachments in the following pages are those that do not appear elsewhere in this proposal.

They include:

- Daily Diversion Log
- Performance evaluations



DAILY DIVERSION LOG

Basin Fire Diversion Data Daily Log															
Date	Cardboard	Plastic #1	Plastic #2	Mixed Paper	Aluminum	Tin Cans	Non-Perishable Food Donation	Perishable Food Donation	Glass	Cooking Oil	Batteries	Pallets	Compost	Grey Water	Other
Weight	Weight	Weight	Weight	Weight	Weight	Weight	Weight	Weight	Weight	Weight	Weight	Weight	Weight	Weight	Weight
7/2	0	0	0	0	0	0	0	194	0	0	0	0	0	0	0
7/3	0	0	0	0	0	0	0	80	0	0	0	0	24	250.2	0
7/4	0	0	0	0	0	0	555	0	0	0	0	0	120	0	0
7/5	0	0	0	0	0	0	0	147	0	0	0	0	1860	417	0
7/6	0	0	0	0	0	0	120	32	0	0	0	0	3830	125.1	0
7/7	0	0	0	0	0	0	0	530	0	1480	0	0	0	166.8	12
7/8	0	0	0	0	0	0	126	130	0	0	0	0	0	333.6	0
7/9	0	0	0	0	0	0	321	1113.2	0	0	0	3	5042.4	125.1	0
7/10	4280	0	0	0	0	0	57	327	0	0	0	0	0	0	0
7/11	0	0	0	0	0	0	40	0	0	200	108	0	0	0	0
7/12	0	0	0	0	0	0	631.44	191.84	0	0	0	0	113	0	0
7/13	152.3	1102.9	246.3	344.2	66	12	23	188	75.4	0	155	250	296.96	0	375
7/14	0	0	0	0	0	0	120	115	0	172	0	0	257.5	0	0
7/15	53.4	99.1	134.5	0	15.5	0	103	189	0	0	0	0	2280	0	53.9
7/16	0	0	0	0	0	0	0	0	21.6	0	0	0	0	0	720
7/17	0	0	0	0	0	0	0	0	0	0	0	0	0	0	0
7/18	2420	0	0	0	0	0	0	0	0	0	0	0	0	0	0
TOTALS	6905.7	1202	380.8	344.2	81.5	12	2096.44	3237.04	97	1852	283	253	13823.86	1417.8	1160.9
Total Diverted Weight															33127.24
Landfill Weight															50565
Diversion Rate															0.3958221216

The Basin Fire Daily Diversion Log tracks the daily weight (in pounds) of materials diverted from the landfill during the Basin Fire. This log provides a clear overview of our recycling efforts, including a breakdown of various materials. The 'Other' category includes items such as fire hoses, electronic waste (E-Waste), and donated goods.



Photos, left to right: Yoshi at a recycle facility. Doug and Yoshi empty a trailer. July 2024.

PERFORMANCE EVALUATIONS

Standard Contractor Performance Report

Highlighted blocks are required to be completed.

Evaluation Type: Interim Final <input checked="" type="checkbox"/> (check one)			
Evaluating Organization (Fire Name): Basin		Reporting Period: From 7/1/2024 to 7/14/2024	
Contracting Office:		Contract Number:	Order Number (Resource Order/Incident #): S-48
Contractor Name: Carty Carson		Contractor Address: 1800 Marquess St	
DUNS:		City: Las Cruces	State: New Mexico
Additional or Alternate Contractor Name:		Zip/Postal Code: 88005	Country: USA
TIN:	Industrial Code (NAICS):	Commodity Code:	Contract Type:
Contract Award Date:	Contract Expiration Date:	Contract Value:	
Requirement Description (Equipment Type): Incident Recycling			

Ratings

Summarize contractor performance and check the number which corresponds to the rating for each rating category (See attached Rating Guidelines).

Quality of Product or Service (How did the Contractor perform, document any noncompliance or performance issues)

0=Unsatisfactory 1=Poor 2=Fair 3=Good 4=Excellent 5=Outstanding

Government Comments for Quality of Product or Service (2000 characters maximum):

Sophia and her crew performance was spectacular. They arrived right as camp was spiking in numbers and had to overcome some challenges in a timely manner. The ICP was a large area of land to cover along with supporting off site ground support and helibase. They performed all duties extremely well and with a smile on there faces.

Timeliness of Performance (Did the Contractor arrive when expected, demob timely, and perform the work in a timely manner)

0=Unsatisfactory 1=Poor 2=Fair 3=Good 4=Excellent 5=Outstanding

Government Comments for Timeliness of Performance (2000 characters maximum):

Yes, the crew arrived in a timely manner and jumped right into setting up recycling areas and identifying high use locations. When I would call and ask for a request it was handled right away. I never had to remind Sophia to follow up on anything no matter how busy she was, she always got the task completed.

Business Relations (Did the Contractor perform in a business-like manner, complete administrative requirements timely)

0=Unsatisfactory 1=Poor 2=Fair 3=Good 4=Excellent 5=Outstanding

Government Comments for Business Relations (2000 characters maximum):

This was my first time working with a recycling vender and I'm so thankful it was with Sophia. She spent one hour of her time going over the contract with me and educating me on what she can charge and what she can not charge for. She had a little delay in creating invoices due to the waste company not wanting to release weight totals with Sophia. Sophia and I had talked with the contracting officer to help assist with getting actual weight tickets from waste company. This took several days which set us back on invoices but not due to any lack on Sophia's part.

PERFORMANCE EVALUATIONS

Additional Info

Contractor Key Personnel

Contractor Manager/Principal Investigator (Owner's Name):

Government Comment on Contractor Manager/Principal Investigator (2000 characters maximum): *(If applicable, describe working relationship with government representatives for this assignment)*

Sophia Nielsen:

Sally Neale was the contracting officer overseeing Sophia's recycling company. Sally helped in facilitating weight tickets from Western Solid Waste because they would not release the ticket without government approval.

Contractor Key Person (Equipment Operator's Name):

Government Comment on Contractor Key Person (2000 characters maximum): *(Describe working relationship with government representatives for this assignment)*

Customer Satisfaction

Is/was the contractor committed to customer satisfaction? Yes No (Check one)

Would you recommend the selection of this firm again? Yes No (Check one)

Government Comments on Customer Satisfaction (2000 characters maximum): *If no to either of above, explain below*

Very satisfied with the quality of work and fast pace that Sophia and her crew were able to complete. You would see these mountains of trash disappear by individuals sorting through and diverting items to the correct channels. Everything was impressive to me, but the compost diversion is what stood out the most. I really like how more than 50% of waste was being repurposed.

I have two suggestions:

- 1) Educating people on what, how, and why, you are doing what you do and how the whole process works. Getting your information into an IAP is recommended.
- 2) Really stand your ground when it comes to the compost diversion set up area. Try mitigating any problems that arise sooner than later. Maybe even have two stations 1) being a drop off and quick station 2) being the more thorough sorting station.

Admin Info

Project Officer/COTR (Individual completing the evaluation)

Name: Carty Carson

Phone: (505)-507-5061

Fax:

E-mail Address: ccarson@bim.gov

Contracting Officer Representative

Name: Kelly Jaramillo

Phone:

Fax:

E-mail Address: Kelly.Jaramillo@usda.gov

Alternate Contractor Representative Name:

Phone:

Fax:

E-mail Address:

Contracting Officer:

Name: Melissa Maestas

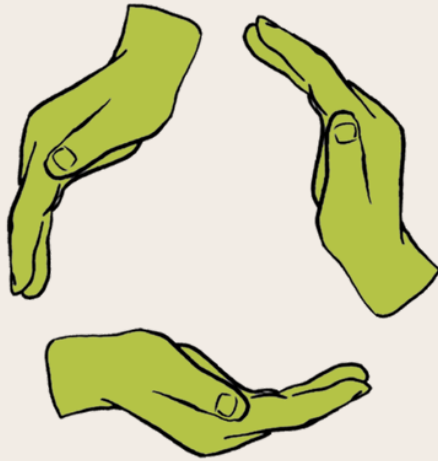
Phone:

Fax:

E-Mail Address: Melissa.Maestas@usda.gov

OMB CLEARANCE NO. 9000-0142
SOURCE SELECTION INFORMATION CONFIDENTIAL

3



W E G E N E R A T I V E

WWW.WEGENERATIVE.COM
ADMIN@WEGENERATIVE.COM
WEGENERATIVE@GMAIL.COM
503-883-1353