



USFS Greening Fires Initiative

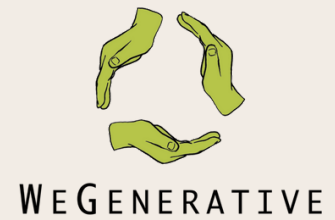
SHELLY WILDFIRE WASTE DIVERSION REPORT

PREPARED BY
SOPHIA NIELSEN, MOLLY MCGEE &
KELSEY BRIXON
WEGENERATIVE LLC
WEGENERATIVE@GMAIL.COM
503.883.1353

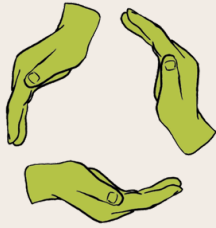


WEGENERATIVE

TABLE OF CONTENTS



Incident Information	3
Executive Summary	4
Our Team	5
Diversion Data	6-16
Program in Action	17
Program Benefits	23
Greenhouse Gas Equivalences	28
Lessons Learned	29
Attachments	31



W E G E N E R A T I V E

WeGenerative LLC
Sophia Nielsen
wegenerative@gmail.com
admin@wegenerative.com
503.883.1353

INCIDENT INFORMATION

Dates of service

Mobilized 7/7/24

Arrived 7/8/24

Demobilized 7/29/24

Report Sent 11/20/24

Incident General Information

Shelly Fire

Klamath National Forest

Shelly ICP Location: 3 Horn Ln Etna, CA 96027

Northern California GACC

Native land of the following tribes*: Confederate Tribes of Silted, Shasta, Modoc, Cayuse, Karuk, Umatilla and Walla Walla

Management

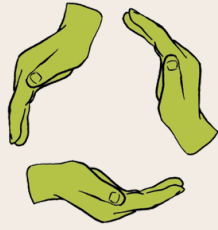
California team 12 , California team 1, Cal Fire Team 6

Personnel

Maximum: 1373; Minimum: 210; Average: 942

Headcount data taken from Situation Report

*This was determined by overlaying the Incident Fire Map from InciWeb with data from Native-Land.ca to identify the native lands affected by the Shelly Fire.



W E G E N E R A T I V E

EXECUTIVE SUMMARY

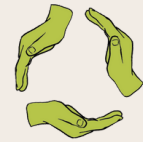
WeGenerative is pleased to present the Waste Diversion Report for the Shelly Wildfire. During our 22 days on the incident implementing waste reduction operations at the ICP, we achieved a significant 47.9% diversion rate by weight overall.

Our approach prioritized community engagement and collaboration. We successfully partnered with local recyclers, farmers, composters, food banks, and on-site personnel, emphasizing the importance of mutual support and positive relations within our team. WeGenerative firmly believes that our team is our most valuable resource, and our focus on positive team morale is instrumental in the success of our operations.

The detailed waste diversion data illustrates our dedication to accurate measurements and calculations. We meticulously weighed and measured materials, deriving diversion data from verified, weighed loads. Noteworthy is our commitment to food donation, contributing to over 16,015.64 lbs of food scraps benefiting multiple local pig farmers and 5,441 lbs of edible food to local food banks. Additionally, we monetized recyclables to donate proceeds to the Rescue Ranch, Valley Oaks Senior Center, and Wildland Firefighter Fund, furthering our commitment to community support.

WeGenerative is grateful for the opportunity to contribute positively to the local community, turning would-be waste into valuable resources and promoting environmental stewardship. Our dedication to waste diversion extends beyond statistics; it represents a commitment to a more sustainable and responsible future.

OUR TEAM



WEGENERATIVE



Our team included (listed in order pictured) Sophia Nielsen, Molly “Badger” McCullough, Kelsey Brixon, Doug Landers, Molly McGee, Darby Davis, Liam Boyd, Jolie Van Slooten, Kylie Foldvary, Cait Lawson, Eric Jolley, Leilani Barnes, Josh “Yoshi” Graveline, and Josh “Best Day Ever” Chandler.

DIVERSION SUMMARY

We diverted
by weight overall.

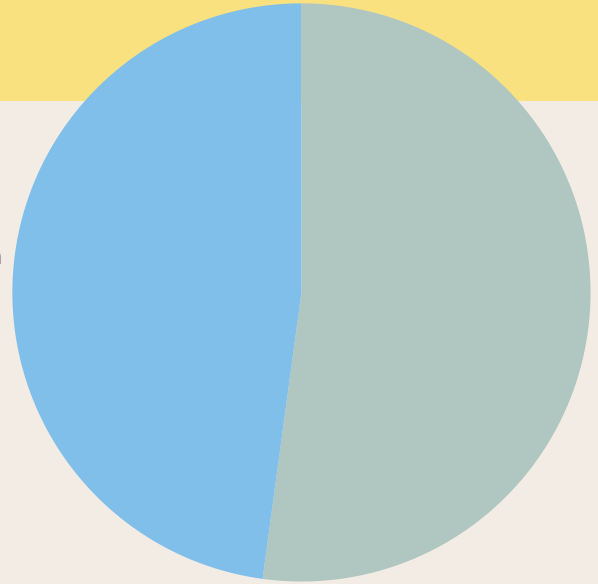
47.9%

Landfill
52481.99 lbs

Total diversion:
57187.2 lbs

Diversion
47.9%

Landfill
52.1%



The pie chart to the right shows diverted (blue) vs wasted materials, (grey) by percentage of weight.



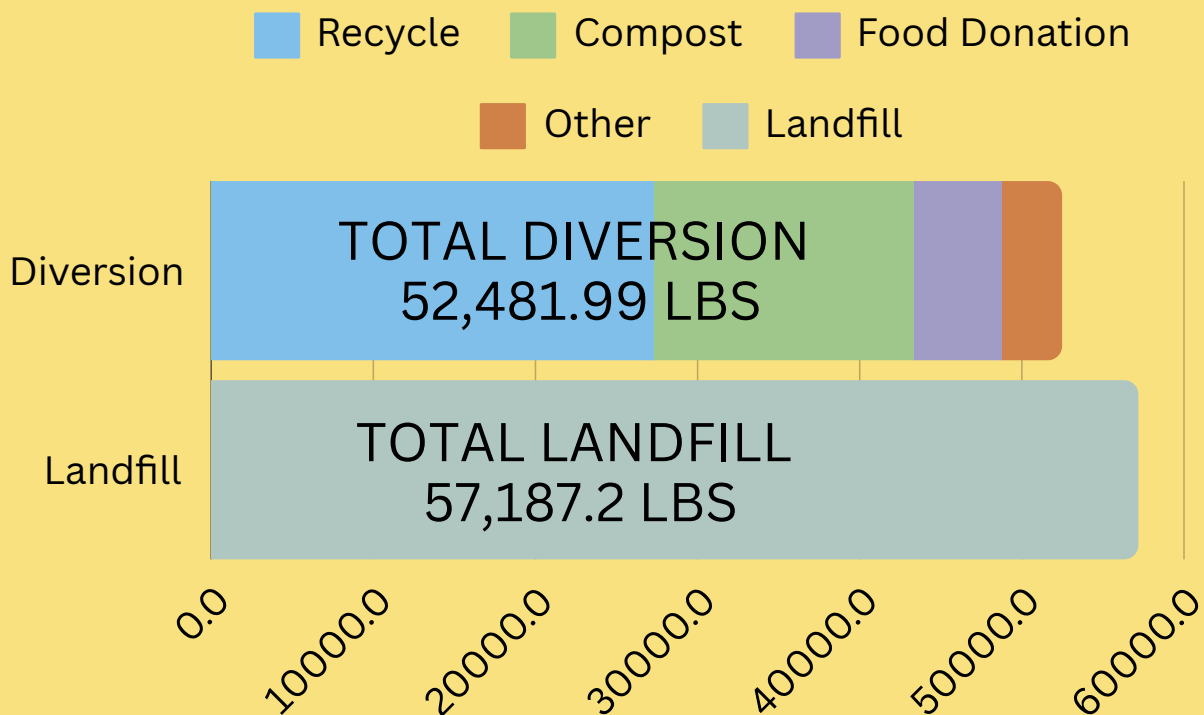
Jolie and Leilani moving a heavy bag of office paper to recycling staging area. July 2024.

DIVERSION DATA



The bar chart below shows the diverted materials as compared to the landfilled materials. Both are measured by weight, in pounds. Combined recycled materials made up the greatest weight overall of all diverted materials when considering each diverted stream: recycling, organics, food donation, and special/other materials.

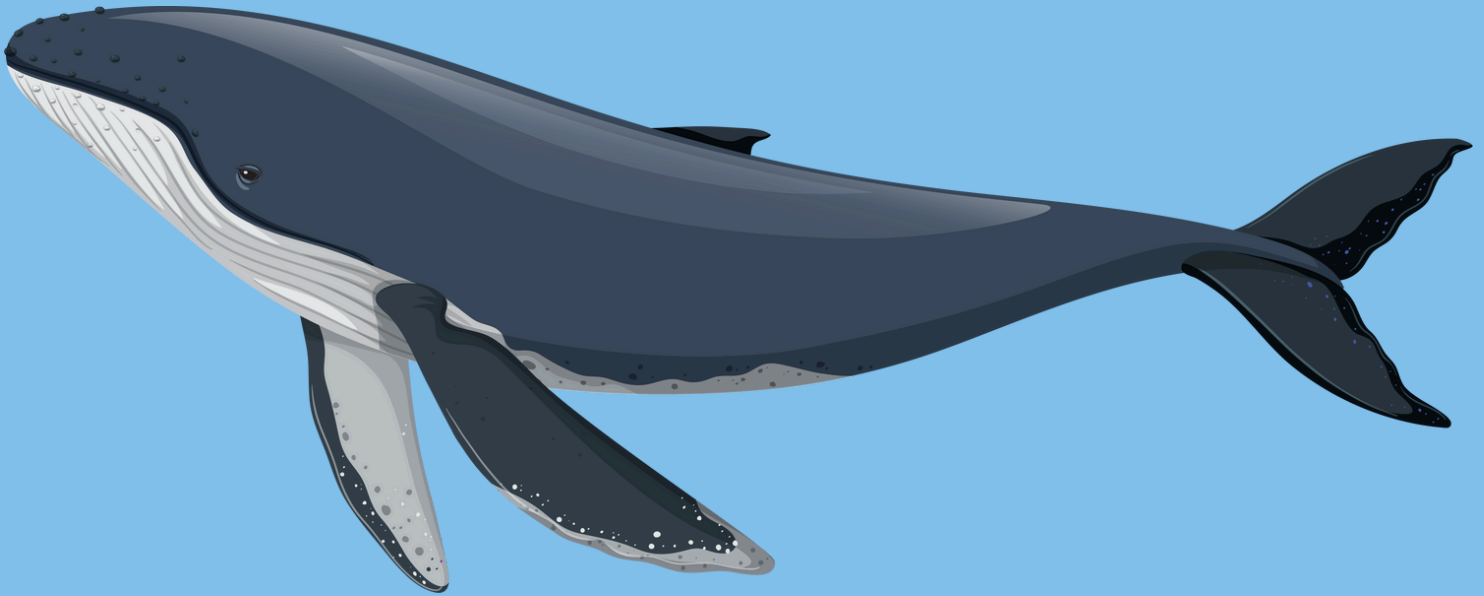
Recycle includes cardboard, paper, plastic bottles, metal cans, scrap metal, and glass.



PICTURE THE IMPACT

It's difficult to imagine what **52,481.99 lbs** of total diversion looks like. Instead, picture this:

We saved 1 humpback whale from landfill



A humpback whale weighs between 50,000 and 60,000 lbs, according to the Marine Mammal Center.

Regardless of whether you picture the resources saved as pounds or whales, our operation saved a significant weight from landfill.

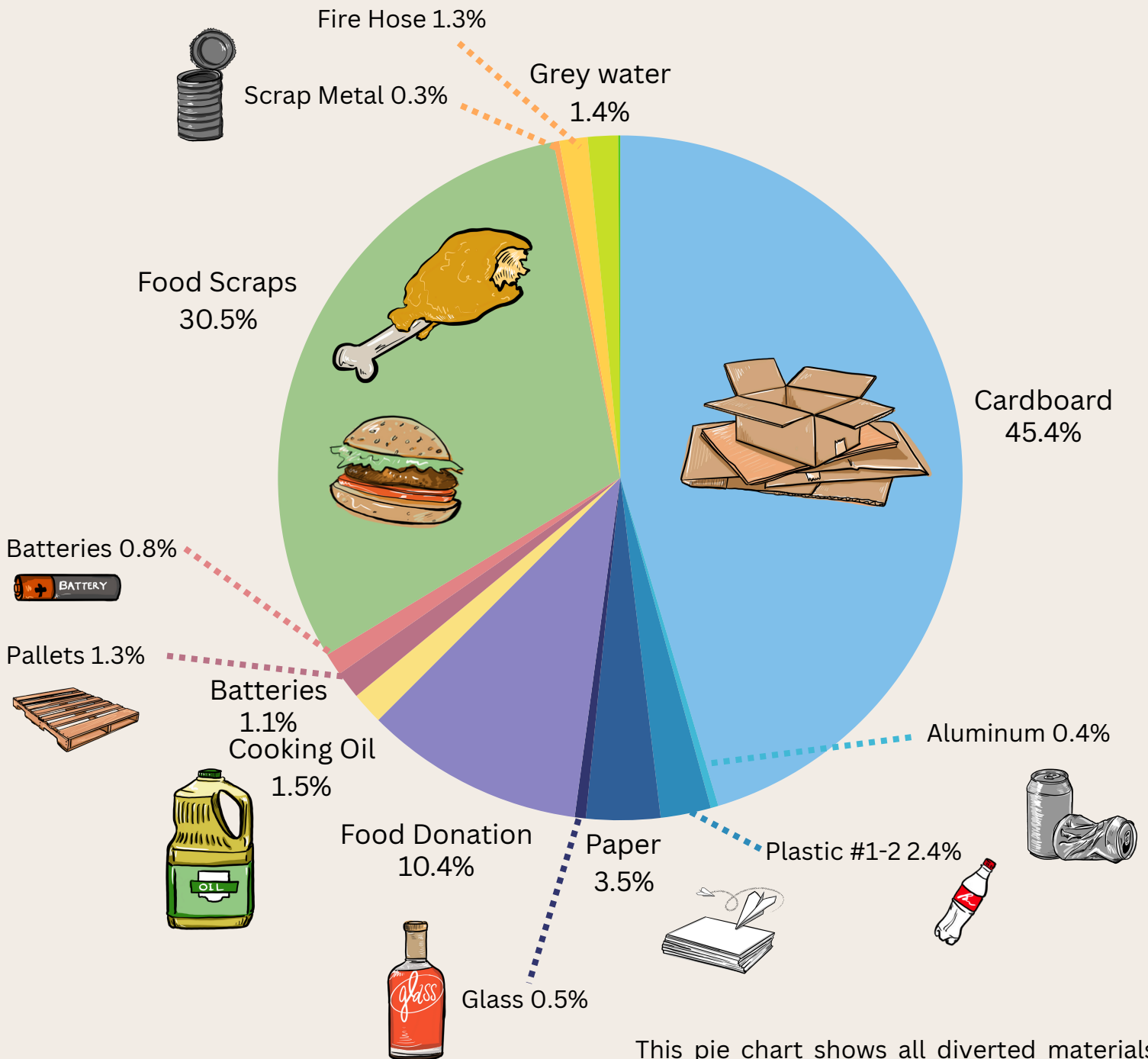
DIVERTED MATERIALS

The following graphic demonstrates the diverted streams at this wildfire.



The visual representation of each material stream is in approximate (not exact) proportion to its significance by weight.

DIVERTED MATERIALS



This pie chart shows all diverted materials by percentage of weight. The most significant material diverted (by weight) was Cardboard, accounting for 45.4% of diverted material.

DIVERSION DATA METHODS



We meticulously weighed, measured, and calculated material weights while on incident. All of our diversion data is from verified, weighed loads. As shown in the photo to the left, we would weigh materials by the bucket or bag, adding them up as we went.

Waste data was calculated based on volumetric conversions of dumpster fullness.

Food scraps were individually weighed by the bucket or bin before being taken to local farmers. Weights were written and calculated to determine daily loads to farmers.

Photo of compost in boxes with weight sheet. 7/17/2024.

Cardboard weights were derived from using EPA metric conversion for cardboard dumpster. Other recycled materials, including bottles, cans, glass, and paper, were weighed at the Yreka Transfer Station.

Food donation weights were weighed by the box by Siskiyou Community Food Bank

Batteries were weighed by the bucket, with final weights verified by Battery Recyclers of America upon mass pickup. Other special materials were individually weighed.

MATERIAL TOTALS

Commodity Type	Amount (Pounds)
Cardboard	23,814.45
Plastic #1	1,239
Plastic #2	8
Paper	1,834
Aluminum	152.5
Tin	37
Glass	273
Scrap Metal	140
Food Scrap	16,015.64
Food Donation	5,441

Commodity Type	Amount (Pounds)
Cooking Oil	795
Batteries	522.8
Pallets	680
Grey Water	750.6
Hose	700
Motor Oil	49



RECYCLING LOCATIONS

Name	Commodity Type	Location	Dates
Scott's Valley Disposal	Cardboard	Etna, CA	7/11/2024, 7/13/2024, 7/15/2024, 7/19/2024, 7/21/2024, 7/23/2024, 7/25/2024, 7/27/2024, 7/29/2024
Yreka Transfer	Plastic #1, Plastic #2, Paper, Aluminum, Tin, Glass	Yreka, CA	7/17/2024, 7/23/2024, 7/24/2024, 7/29/2024
Redway Transfer Station	Scrap Metal	Redway, CA	9/30/2024
Siskiyou Community Food Bank	Food Donation	Tollhouse	7/17/2024, 7/20/2024, 7/21/2024, 7/27/2024, 7/29/2024
Smart Fuels Alternative	Cooking Oil	Redding, CA	7/18/2024, 7/23/2024, 7/29/2024
O'Reilly's Auto Parts	Motor Oil	Redding, CA	7/30/2024
Sequoia Zoo	Fire Hose	Eureka, CA	7/30/2024

RECYCLING LOCATIONS

Name	Commodity Type	Location	Dates
Jimmy's Farm	Food Scrap	Etna, CA	7/13/2024, 7/16/2024, 7/18/2024, 7/23/2024, 7/24/2024
Donny's Farm	Food Scrap	Fort Jones, CA	7/11/2024, 7/12/2024, 7/14/2024, 7/15/2024, 7/16/2024, 7/18/2024, 7/21/2024, 7/23/2024, 7/25/2024, 7/26/2024, 7/27/2024, 7/28/2024,
Darren's Farm	Food Scrap	Monteque, CA	7/17/2024, 7/17/2024, 7/19/2024, 7/21/2024, 7/24/2024, 7/25/2024, 7/26/2024, 7/27/2024, 7/29/2024
All American	Grey Water	Shelly Grey Water Contractor	7/22/2024, 7/29/2024
Battery Recyclers of America	Batteries	National Battery Recycling Company	7/30/2024

WASTE LOCATIONS

Name	Commodity Type	Location	Dates
Scott's Valley Disposal	Landfill Estimated weights used	Etna, CA Hauled from Etna ICP	7/11/2024, 7/13/2024, 7/15/2024, 7/19/2024, 7/21/2024, 7/23/2024, 7/25/2024, 7/27/2024, 7/29/2024

WASTE WEIGHT RECEIPTS

Click this link to access a Google folder containing labeled and dated documentation photos of all landfill dumpsters collected during the Shelly Fire by Scotts Valley Disposal. These images were used to accurately calculate dumpster weights using the EPA metric conversion factor of 138 lbs per cubic yard of waste.

SHELLY 2024 DUMPSTER DOCUMENTATION:

https://drive.google.com/drive/folders/1EESy15z_rX6sOBGABOET6PxYitzqMQa?usp=sharing

Examples



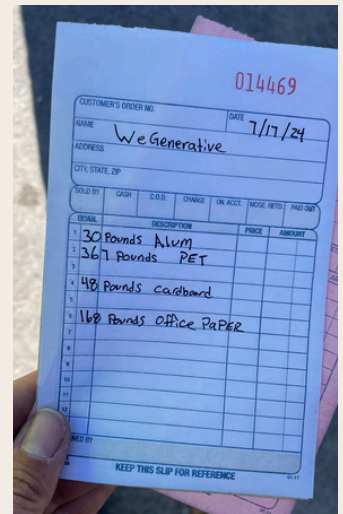
RECYCLING RECEIPTS

Click this link to access a Google folder with daily diversion documentation (photos, weights, and receipts) for the Shelly Fire.

SHELLY 2024 RECYCLING PHOTOS AND RECEIPTS:

[HTTPS://DRIVE.GOOGLE.COM/DRIVE/FOLDERS/1YHFVX-ZW31OQPNNF3FYBQ5EZGWJ0LU3L?USP=SHARE_LINK](https://drive.google.com/drive/folders/1YHFVX-ZW31OQPNNF3FYBQ5EZGWJ0LU3L?usp=share_link)

Examples

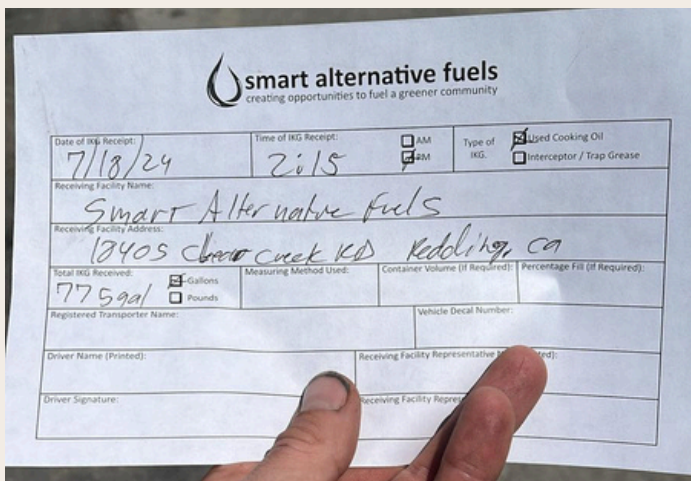


Photos from top left, clockwise: Food scraps and weights donated to Darren's farm. 7/19/24.

Non-perishable weight receipt from Siskiyou Community Food Bank. 7/8/17/24.

Recycling drop receipt from Yreka Transfer Station. 7/17/24.

Cooking Oil receipt from Smart Alternative Fuels. 7/18/24.



SHELLY FIRE : ETNA ICP



Shelly fire recycle center. July 2024.

Shelly Fire was in Etna, CA. We were familiar with Etna from having worked there during 2023 at the Happy Camp Complex wildfire. Before we even arrived on site, our local pig farmer friends that we met last year had reached out in hopes that we were coming to work on the fire so that they could receive food scrap donations again. Our friends at Siskiyou Community Food Bank were as enthusiastically available to receive donations again. This fire came with many evacuation notices for the surrounding small towns, and this stress within the community made our work feel particularly meaningful. We are grateful to continue to serve the local community members that we've met in the course of this work.

RECYCLE CENTER



Photos from top, counterclockwise (July 2024):

Cait at Recycle Center.

Yoshi, Best Day, and Badger sorting trash.

Darby and Cait Sorting Trash.



PROGRAM IN ACTION



Photos from top left, clockwise:

Jolie with food scraps at Donny's farm. 7/25/24.

Badger loading box truck heading to Yreka Transfer station. 7/23/24.

Molly with a large pig trough full of food scraps dropped at Donny's farm. 7/25/24.

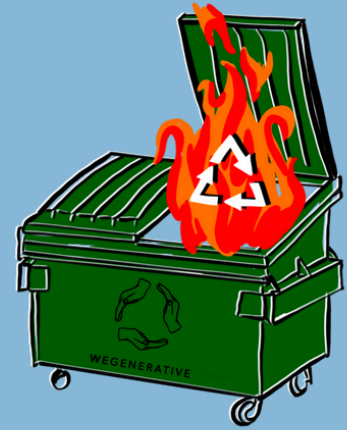
Molly with baby pigs as they munch food scraps at Donny's farm. 7/25/24.

PROGRAM IN ACTION



Photos from top, clockwise (July 2024): team at lunch, including Kylie, Cait, Kelsey, Darby and Soph. Jolie loads up materials in the truck. Cait carries bags of recycling to stage. Molly pulls food scraps out of the dumpster.

PROGRAM IN ACTION



Photos from top, clockwise (July 2024): Kelsey holds up bag she dumpster dived with fire glowing red in the night sky behind her. Liam holds bin lid he made to look like a pig face. Badger loads boxes of nonperishable food donations for the Siskiyou Community Food21 Bank.

PROGRAM IN ACTION



Photos from top, clockwise (July 2024): Yoshi smiles grabbing a bag of plastic bottles to load. Yoshi throws bag to Badger in the truck. Badger loads and stacks bags of bottles in truck. Best Day and Badger hand last bags to fit into box truck.

PROGRAM BENEFITS

Benefits of implementing waste reduction at this wildfire included:

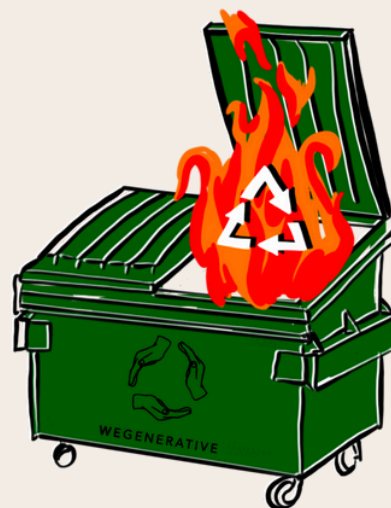
Giving back to local farmers. We donated edible food and food scraps on a daily basis. On average, we donated 728 lbs food a day to local farmers.

Food Sorted, Saved, and Donated to Food Banks. We donated over 5441 lbs of edible food to Siskiyou Community Food Bank.

Recycling Proceeds Donated to NonProfits. Our sorted recyclables were monetized for donation to charity. Charity options were presented to logistics teams based on our engagement with the community and selected by the Logistics Chief. We donated a total of \$304.42, distributed equally three ways to Valley Oak Senior Center, the Rescue Ranch, the Wild Land Fire Fighter's Fund.

Reducing liquid trapped in landfill. It is estimated that 1% of the world's fresh water supply is trapped in water bottles with their caps on, sealed in landfills. We always empty the liquid out of water bottles and other containers while we sort waste. We partnered with a grey water contractor on site to recycle 750.6 Lbs of grey water.

Turning would-be waste into resources. On the Shelly fire we partnered with Smart Alternative Fuels to recycle 795 Lbs of cooking oil, which will be converted to biofuel. We also collected 552.8 Lbs of batteries which were responsibly recycled by Battery Recyclers of America.



SUPPORTING LOCAL FARMERS

Donny's Farm



We are grateful to have worked with a total of 3 farmers: Donny's Farm, Darren's Farm, and Trina and Jimmy's Farm. We worked with each farmer to ensure that the food scraps we brought them adhered to the unique needs of their animals. Over the course of our time on incident, we donated an average of

728 LBS OF FOOD TO FARMERS A DAY

FOOD DONATIONS FOR THE LOCAL COMMUNITY

We focus on food donation as the most valuable resource to save from waste and contribute positively to the local community. We partnered daily with the caterers and the Reefer team at each ICP, and sorted through individual leftovers and lunches to achieve large volumes of daily food donation. We donated food to Siskiyou Community Food Bank.

5,441 LBS OF FOOD DONATED



Badger and Cait help Siskiyou Community Food Bank angel Mary load up trucks full of non-perishable food donation. 7/21/24.



Box truck loaded up with 63 boxes of lunches (630 lunches) to be brought straight from the reefer to Siskiyou Community Food Bank. 7/20/24.

247.3 LBS FOOD DONATED A DAY

RECYCLING FOR CHARITY

We sorted, transported, and monetized recycling including plastic bottles, aluminum cans, and scrap metal for donation to local charity in partnership with Yreka Transfer Station. In total, recycling became

\$304.42 DONATED

towards the Valley Oak Senior Center, the Rescue Ranch, and the Wild Land Fire Fighter's Fund charities. Each entity got one third of the above amount.

Valley Oak Senior Center serves Scott Valley and surrounding communities by offering recreational activities and social events for seniors. In addition, it operates as a community food distribution center for Greenview, supporting local residents with essential resources.

Rescue Ranch is a no-kill, 501(c)(3) nonprofit dog rescue in Northern California, rehoming hundreds of dogs annually and providing medical, transport, and other support. Funded by donations and operated by volunteers, it offers a sanctuary for "unadoptable" dogs to live out their lives.

Wild Land Fire Fighter's Fund is dedicated to supporting the families of fallen firefighters and assisting injured firefighters. They provide financial aid, mental health support, and a range of services to help firefighters and their families during times of crisis.



Yreka Transfer YREKA CA 95561 EST. 1959							
WEGENERATIVE							
DATE	CANS	GLASS	PET	HDPE	PAPER	CARDBOARD	STEEL CANS
7/17/2024	30	0	367	0	168	48	0
7/23/2024	53	0	264	0	0	0	12
7/24/2024	30	0	437	0	168	0	68
7/24/2024	8	136	87	8	1141	77	68
7/29/2024	42	137	179	0	341	35	25
* grocery bag						*	
Paper							
TOTALS	163	273	1334	8	1818	160	105
	Weight	Rate	Total				
CANS	163	0.65	105.95				
GLASS	273	0.01	2.73				
PET	1334	0.1	133.4				
HDPE	8	0.05	0.4				
PAPER	1818	0.03	54.54				
CARDBOARD	160	0.02	3.2				
STEEL CANS	105	0.04	4.2				
	TOTAL		304.42				

Photos from top to bottom:
Badger loading plastic bottles and aluminum cans. July 2024.
Chart depicting monetized recycling from Yreka Transfer. September 2024.

SPECIAL MATERIALS

Special materials require special considerations, processes, and outlets. They include pallets, batteries, cooking oil, scrap metal, and fire hose.

We are excited about our continued partnership for used fire hose donation with the Sequoia Zoo Program. The hose will be repurposed into enrichment materials for zoo wildlife, which could include toys for tigers and hanging hammocks for monkeys.



Photos from top left, clockwise (July 2024): Sequoia Zoo receiving fire hose donation from Shelly and Hill fires. Pallets brought to Yreka Tractor Co. Cooking oil being loaded up to be brought to Smart Alternative Fuels. Pile of fire hose at Sequoia Zoo. Batteries collected at Shelly fire.

GREENHOUSE GAS EQUIVALENCES:

The Impact of Saving Food From the Landfill

On the Shelly fire we saved 21,456.64 lbs of food from the landfill, this includes both the edible food we donated to local food banks and food scraps we donated to farmers. It's hard to picture what it looks like to save 21,456.64 lbs of food from being landfilled, let alone the 81,535.2 lbs of methane emissions* consequently prevented from entering the atmosphere and negatively contributing to the greenhouse gas effect.

Instead, picture this:

From the food waste we saved alone...

(not including any of the emissions saved from recycling efforts of other materials)

We sequestered the same amount of carbon as:

1,209 acres of US forests in a year

We saved the greenhouse gas emissions equivalent of

NOT burning 1,141,250 lbs of coal



*a single pound of food waste that is not landfilled is estimated to save 3.8 lbs of methane emissions according to the Food and Agriculture Organization. Emissions equivalencies above are calculated using the EPA Emissions Equivalence Calculator.

LESSONS LEARNED

The following are our team's lessons learned and suggestions for improvement on future incidents.

Challenges

- Due to the nature of the fire, we stay prepared to evacuate the area.
- Catering was unaccustomed to working with recyclers.
- Traffic flow through the incident and the placement of dumpsters necessitated us to set up multiple front of house recycle centers to intercept dumping.

Successful Strategies

- Working with farmers and food banks we had established relationships with at previous incidents
- Placing clearly labeled food scraps bins, designed to resemble pigs, at catering stations for efficient collection of meal leftovers
- Setting up multiple front-of-house recycling centers to intercept waste at each dumpster where dumping was occurring

Safety Best Practices

- Having clear evacuation protocols within our team, and maintaining constant communication with IMT POC's such that we were well informed of the likelihood of evacuation and the proper procedure were it to be necessary. Thankfully, it was not.





Photo of Soph, Badger, and Kelsey in the truck. July 2024.

Thank You

SPECIAL THANKS TO

Mary and Laura at Siskiyou Community Food Bank

Darren and his pigs

Donny and his pigs

Jimmy, Trina and their pigs

FACL Travis

BCMG Percy

FDUL Sam

FACL Nick Sablan

FACL Maldo

The CCC's

ATTACHMENTS NOT ELSEWHERE INCLUDED

Attachments in the following pages are those that do not appear elsewhere in this proposal.

They include:

- Daily Diversion Log
- Performance evaluations



DAILY DIVERSION LOG

SHELLY Diversion Data Daily Log															
Date	Cardboard	Plastic #1	Plastic #2	Mixed Paper	Aluminum	Tin Cans	Non-Perishable Food Donation	Perishable Food Donation	Glass	Cooking Oil	Batteries	Pallets	Compost	Grey Water	Other
	Weight	Weight	Weight	Weight	Weight	Weight	Weight	Weight	Weight	Weight	Weight	Weight	Weight	Weight	Weight
7/10	0	0	0	0	0	0	0	0	0	0	0	0	0	0	0
7/11	1221.6	0	0	0	0	0	0	0	0	0	0	0	0	216	0
7/12	0	0	0	0	0	0	0	0	0	0	0	0	0	235	0
7/13	3159	0	0	0	0	0	0	0	0	0	0	0	0	244	0
7/14	0	0	0	0	0	0	0	0	0	0	0	0	0	321	0
7/15	3222.6	0	0	0	0	0	0	0	0	0	0	0	0	675	0
7/16	0	0	0	0	0	0	0	0	0	0	0	0	0	570	0
7/17	4638	367	0	168	30	0	755	0	0	0	0	0	0	676.88	0
7/18	0	0	0	0	0	0	0	0	0	200	0	0	0	1200.98	0
7/19	0	0	0	0	0	0	0	0	0	0	0	0	0	1379.3	0
7/20	0	0	0	0	0	0	42	1300	0	0	0	0	0	0	0
7/21	3262.5	0	0	0	0	0	1497	0	0	0	0	0	0	1845	0
7/22	0	0	0	0	0	0	0	0	0	0	0	0	0	0	250.2
7/23	2193.75	264	0	0	53	0	0	0	0	320	0	0	0	633	0
7/24	0	429	8	1290	27.5	12	0	0	0	0	0	0	0	828.2	0
7/25	1422.6	0	0	0	0	0	0	0	136	0	0	0	0	1997.68	0
7/26	0	0	0	0	0	0	0	0	0	0	0	0	0	1033.6	0
7/27	1377	0	0	0	0	0	934	0	0	0	0	0	0	2012.8	0
7/28	0	0	0	0	0	0	0	0	0	0	552.8	0	0	1457	0
7/29	3317.4	179	0	376	42	25	913	0	0	275	0	680	690.2	500.4	0
7/30	0	0	0	0	0	0	0	0	137	0	0	0	0	0	889
TOTALS	23814.45	1239	8	1834	152.5	37	4141	1300	273	795	552.8	680	16015.64	750.6	889
Total Diverted Weight															52481.99
Landfill Weight															57187.2
Diversion Rate															0.4785481684

The Shelly Fire Daily Diversion Log tracks the daily weight (in pounds) of materials diverted from the landfill during the Shelly Fire. This log provides a clear overview of our recycling efforts, including a breakdown of various materials. The 'Other' category includes items such as fire hoses, scrap metal, and motor oil.



Photos from left (July 2024): the Shelly fire glows red in the night sky behind the dumpsters. The moon glows behind the Recycle Center.

PERFORMANCE EVALUATIONS

Standard Contractor Performance Report

Highlighted blocks are required to be completed.

Evaluation Type: Interim <input checked="" type="checkbox"/> Final <input type="checkbox"/> (check one)	
Evaluating Organization: IMT-5 BCMG	Reporting Period: From 7/8/24 to 7/18/24
Contracting Office: USDA Forrest Service	Contract Number: Order Number (Resource Order/Incident #): E-103
Contractor Name: WEGENERATIVE LLC	Contractor Address: 213110 th street
DUNS:	City: Los Osos State: CA
Additional or Alternate Contractor Name:	Zip/Postal Code: 93402 Country: USA
TIN: Industrial Code (NAICS):	Commodity Code: Contract Type: local
Contract Award Date:	Contract Expiration Date: Contract Value:
Requirement Description (Equipment Type): Recycle	

Ratings

Summarize contractor performance and check the number which corresponds to the rating for each rating category (See attached Rating Guidelines).

Quality of Product or Service (How did the Contractor perform, document any noncompliance or performance issues)

<input type="checkbox"/> 0=Unsatisfactory	<input type="checkbox"/> 1=Poor	<input type="checkbox"/> 2=Fair	<input type="checkbox"/> 3=Good	<input type="checkbox"/> 4=Excellent	<input checked="" type="checkbox"/> 5=Outstanding
---	---------------------------------	---------------------------------	---------------------------------	--------------------------------------	---

Government Comments for Quality of Product or Service (2000 characters maximum):

The recycle team had a good set up with recycle locations all over camp. They work hard to make recycling convenient. Overall the team had great attitudes and always has a smile on their faces, bringing good moral to the camp.

Timeliness of Performance (Did the Contractor arrive when expected, demob timely; and perform the work in a timely manner)

<input type="checkbox"/> 0=Unsatisfactory	<input type="checkbox"/> 1=Poor	<input type="checkbox"/> 2=Fair	<input type="checkbox"/> 3=Good	<input type="checkbox"/> 4=Excellent	<input checked="" type="checkbox"/> 5=Outstanding
---	---------------------------------	---------------------------------	---------------------------------	--------------------------------------	---

Government Comments for Timeliness of Performance (2000 characters maximum):

The team had a huge impact on the reduction of garbage from camp. Very impressive work ethics.

Business Relations (Did the Contractor perform in a business-like manner; complete administrative requirements timely)

<input type="checkbox"/> 0=Unsatisfactory	<input type="checkbox"/> 1=Poor	<input type="checkbox"/> 2=Fair	<input type="checkbox"/> 3=Good	<input type="checkbox"/> 4=Excellent	<input checked="" type="checkbox"/> 5=Outstanding
---	---------------------------------	---------------------------------	---------------------------------	--------------------------------------	---

Government Comments for Business Relations (2000 characters maximum):

Outstanding business practices very easy and pleasant to work with .

Thank you for your hard work and great addition to the fire.

PERFORMANCE EVALUATIONS

Standard Contractor Performance Report

Highlighted blocks are required to be completed.

Evaluation Type: Interim <input checked="" type="checkbox"/> Final <input type="checkbox"/> (check one)		
Evaluating Organization: IMT-5 BCMG		Reporting Period: From 7/8/24 to 7/18/24
Contracting Office: USDA Forrest Service		Contract Number: Order Number (Resource Order/Incident #): E-103
Contractor Name: WEGENERATIVE LLC		Contractor Address: 213110 th street
DUNS:	City: Los Osos	State: CA
Additional or Alternate Contractor Name:		Zip/Postal Code: 93402 Country: USA
TIN:	Industrial Code (NAICS):	Commodity Code: Contract Type: local
Contract Award Date:		Contract Expiration Date: Contract Value:
Requirement Description (Equipment Type): Recycle		

Ratings

Summarize contractor performance and check the number which corresponds to the rating for each rating category (See attached Rating Guidelines).

Quality of Product or Service (How did the Contractor perform, document any noncompliance or performance issues)

<input type="checkbox"/> 0=Unsatisfactory	<input type="checkbox"/> 1=Poor	<input type="checkbox"/> 2=Fair	<input type="checkbox"/> 3=Good	<input type="checkbox"/> 4=Excellent	<input checked="" type="checkbox"/> 5=Outstanding
---	---------------------------------	---------------------------------	---------------------------------	--------------------------------------	---

Government Comments for Quality of Product or Service (2000 characters maximum):

The recycle team had a good set up with recycle locations all over camp. They work hard to make recycling convenient. Overall the team had great attitudes and always has a smile on their faces, bringing good moral to the camp.

Timeliness of Performance (Did the Contractor arrive when expected, demob timely; and perform the work in a timely manner)

<input type="checkbox"/> 0=Unsatisfactory	<input type="checkbox"/> 1=Poor	<input type="checkbox"/> 2=Fair	<input type="checkbox"/> 3=Good	<input type="checkbox"/> 4=Excellent	<input checked="" type="checkbox"/> 5=Outstanding
---	---------------------------------	---------------------------------	---------------------------------	--------------------------------------	---

Government Comments for Timeliness of Performance (2000 characters maximum):

The team had a huge impact on the reduction of garbage from camp. Very impressive work ethics.

PERFORMANCE EVALUATIONS

Additional Info

Contractor Key Personnel

Contractor Manager/Principal Investigator (Owner's Name):

Government Comment on Contractor Manager/Principal Investigator (2000 characters maximum): *(If applicable, describe working relationship with government representatives for this assignment)*

Contractor Key Person (Equipment Operator's Name):

Government Comment on Contractor Key Person (2000 characters maximum): *(Describe working relationship with government representatives for this assignment)*

Customer Satisfaction

Is/was the contractor committed to customer satisfaction? Yes No *(Check one)*

Would you recommend the selection of this firm again? Yes No *(Check one)*

Government Comments on Customer Satisfaction (2000 characters maximum): *If no to either of above, explain below*

Admin Info

Project Officer/COTR *(Individual completing the evaluation)*

Name: Travis Robinson fact

Phone:

Fax:

E-mail Address: 530-559-1007

PERFORMANCE EVALUATIONS

EXHIBIT E – Incident Blanket Purchase Agreement (I-BPA) Performance Evaluation

Highlighted blocks are required to be completed.

Agreement Number: 1202SB22T0025 MOD_P00003		Rating Period: From <u>7/9/2024</u> to <u>7/29/2024</u>	
Contracting Office (Including Address): Leadville Ranger District 810 Front Street Leadville, CO. 80461		Fire Name: SHELLY FIRE	Resource Order Number: S-103
Contractor Name: WeGenerative		Requirement Description (Equipment Type): On-Site Recycling Services	

Ratings

Summarize contractor performance and check the number which corresponds to the rating for each rating category (See attached Rating Guidelines).

Quality of Product of Service (How did the contractor perform—document any noncompliance or performance issues)

N/A	0=Unsatisfactory	1=Marginal	2=Satisfactory	3=Very Good	4=Exceptional
-----	------------------	------------	----------------	-------------	---------------

Government Comments for Quality of Product or Service (2000 characters maximum):

Excellent supplies, the Recycling was very organized and functional.

Timeliness of Performance (Schedule) (Did the contractor arrive when expected, demo, and perform the work in a timely manner)

N/A	0=Unsatisfactory	1=Marginal	2=Satisfactory	3=Very Good	4=Exceptional
-----	------------------	------------	----------------	-------------	---------------

Government Comments for Timeliness of Performance (2000 characters maximum):

Kelcy and her crew were able to respond to on-site needs very quickly, all stations were placed properly and within impacted areas.

Business Relations (Did the contractor perform in a business-like manner, complete administrative requirements in a timely manner)

N/A	0=Unsatisfactory	1=Marginal	2=Satisfactory	3=Very Good	4=Exceptional
-----	------------------	------------	----------------	-------------	---------------

Government Comments for Business Relations (2000 characters maximum):

Kelcy and her crew were very cooperative. They were very pleasant to work with. They were responsive to any of the requests that we made at any time.

Would you recommend ordering this contractor again? Yes No (Check one)

Government Comments on Customer satisfaction (2000 characters maximum): (If no above, explain below)

WeGenerative provided a reliable and professional service to this incident. Soph / Kelcy and her crew were highly professional and timely in their services. Kelcy was very responsive to needs on the incident, and communicated the status of the units often. Invoices were turned in timely, Definitely recommend them for future assignments.

PERFORMANCE EVALUATIONS

Exhibit E (cont.)

Contractor comments:

This rating has been discussed with me (Contractor signature):

[Handwritten Signature]

Date: 7/29/24

Rated by (signature):

[Handwritten Signature]

Date: 7/29/2024

Admin Info (please print)

Project Officer/COTR (Individual completing the evaluation)

Name: Nicholas Sablan

Phone: 530-812-5720

Email address: nasablan@earthlink.net

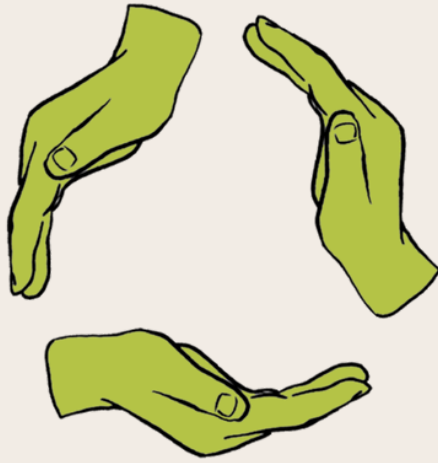
Contractor Representative

Name: Sophia Nielson

Phone: 503-883-1353

Email Address: ADMIN@WEGENERATIVE.COM

****EVALUATOR TO RETURN A COMPLETED EVALUATION FORM TO FINANCE SECTION****



W E G E N E R A T I V E

WWW.WEGENERATIVE.COM
ADMIN@WEGENERATIVE.COM
WEGENERATIVE@GMAIL.COM
503-883-1353